

KAWAI



Concert Artist

CA49 · CA59 · CA79 · CA99





Feel Inspired

A piano that will encourage enthusiastic players to become accomplished pianists, and transform living rooms into grand concert halls. This is the ambitious philosophy behind Kawai's latest Concert Artist series – premium instruments that capture the essence of playing a magnificent concert grand piano, and inspire musicians to realise their true artistic potential.

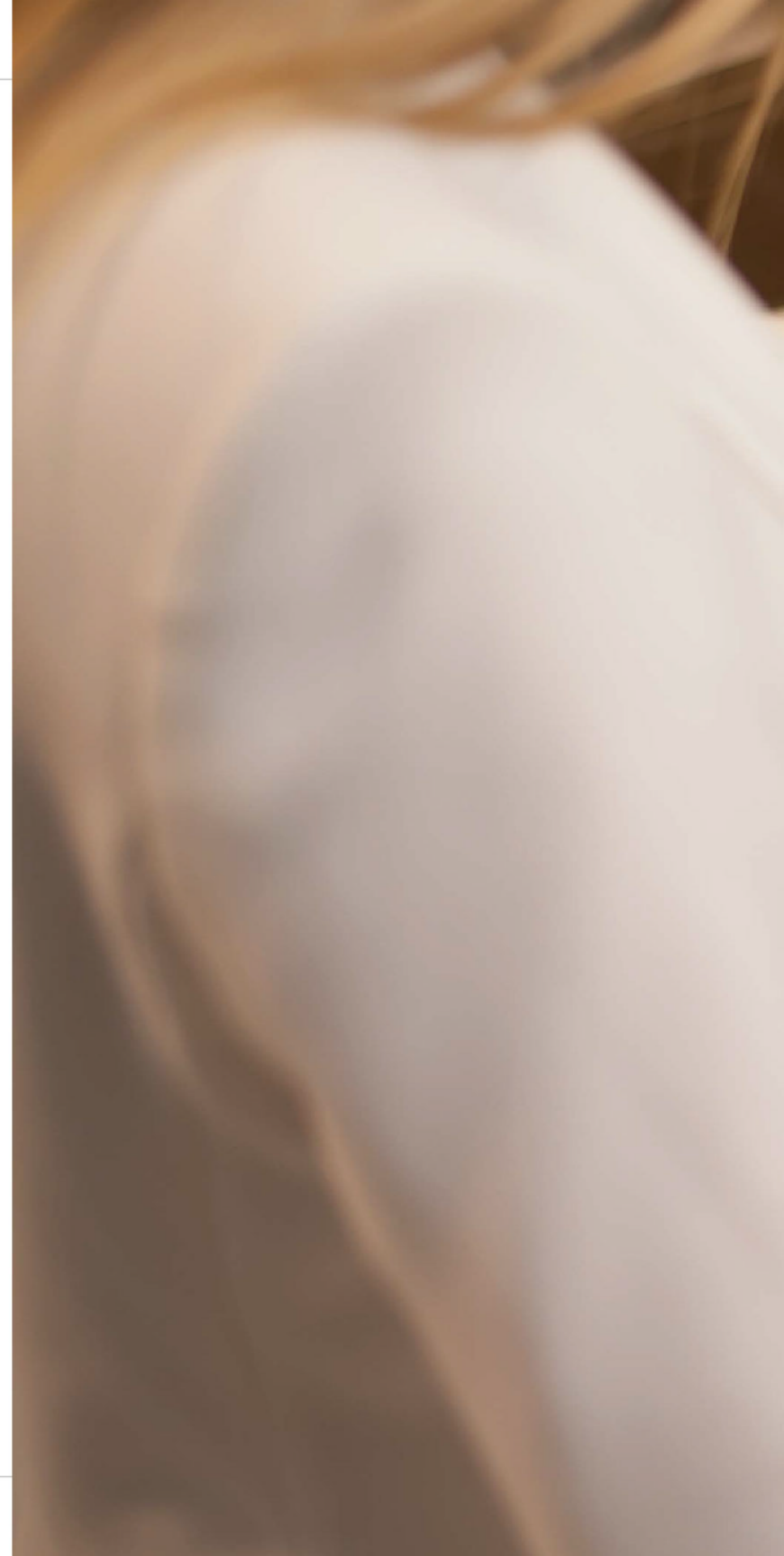
To achieve this ambition, these first-class instruments combine Kawai's industry-leading wooden-key keyboard action, with an array of stunning acoustic piano sounds reproduced using premium audio and speaker technologies, and a variety of convenient, modern features that enhance one's playing experience. The result is a series of exceptional digital pianos that deliver authenticity, performance, and reliability.

Introducing the new Concert Artist series from Kawai – feel inspired.

Unbelievable Touch

The keyboard action of an acoustic grand piano is comprised of black and white keys, graded hammers, and numerous other components, all working in harmony when each note is pressed. This beautifully designed mechanism allows gifted pianists to express a wealth of feeling and emotion in their music, as they respond to the tactile nuances transmitted through the keyboard.

Translating the piano action's intricate movements to a digital instrument, while retaining these acoustic-like subtleties is an extremely challenging task. The Concert Artists' latest *Grand Feel* wooden-key keyboard actions achieve this goal by drawing upon Kawai's 90+ years of knowledge and experience in crafting the world's finest pianos. This ensures an incredibly realistic touch feeling, and is one of the reasons for these instruments' inspiring playability.





KAWAI

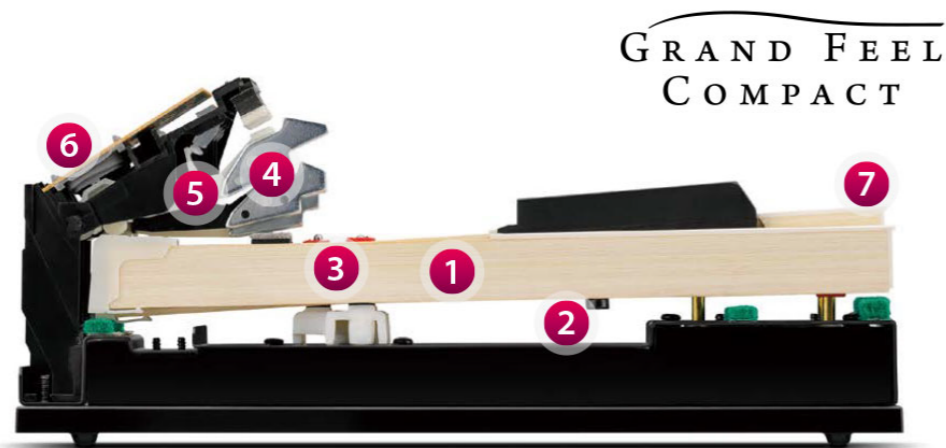
GRAND FEEL WOODEN-KEY KEYBOARD ACTIONS

Embracing many of the long-established principles associated with an acoustic piano, the *Grand Feel* keyboard actions utilised by the latest Concert Artist instruments combine realistic materials, motion, and mechanics to recreate the touch of the finest concert grand pianos.

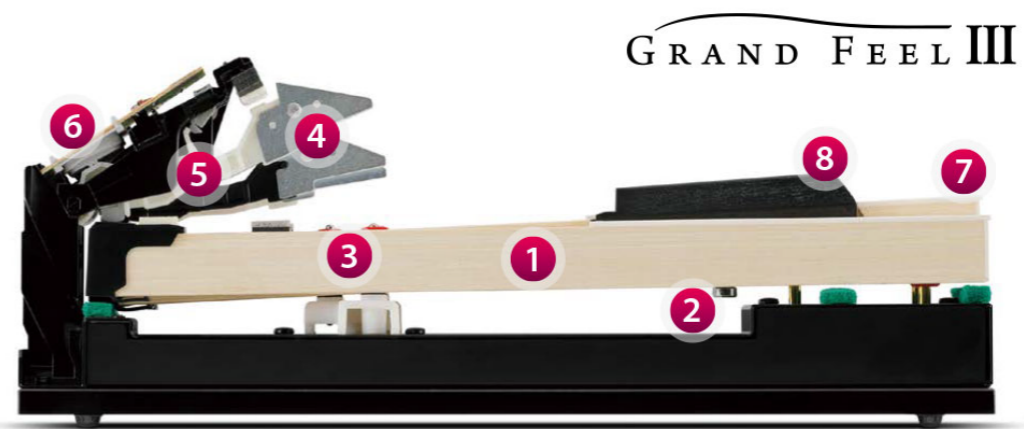
All 88 black and white keys are crafted entirely from long pieces of wood, rather than a plastic shell with wooden sides. This ensures that weight is distributed evenly throughout the length of the keystick, and guarantees an efficient transfer of movement energy when each note is struck.

Each wooden key pivots smoothly on a metal balance pin, with the ends rising and falling naturally like a seesaw to replicate the familiar motion of an acoustic piano keyboard. These balance pins are offset slightly for the black keys in order to provide a more consistent touch weight.

When the front of a key is pressed, the back lifts up, throwing a grade-weighted hammer located above the keyboard to strike a pressure switch. The amount of force applied to this switch is then measured, and the corresponding note played with authentic tonal character and volume.



Grand Feel Compact action (CA49/CA59)



Grand Feel III action (CA79/CA99)

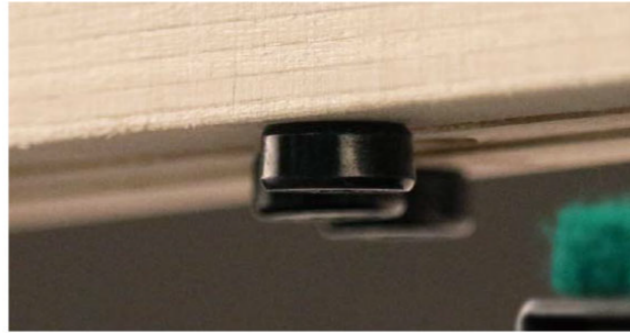
- 1 Wooden key
- 2 Counterweight
- 3 Balance pins
- 4 Weighted hammers
- 5 Let-off mechanism
- 6 Triple sensor
- 7 Ivory Touch key surface
- 8 Ebony Touch key surface



KEY SURFACES

The Concert Artist's white keys are topped with Kawai's authentic *Ivory Touch* surface material, which possesses an attractive matte finish that is smooth but not slippery.

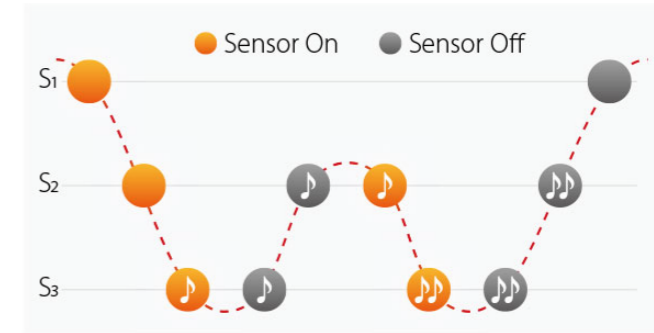
Complementing these premium white keys, the CA79/CA99's *Grand Feel III* keyboard action also incorporates *Ebony Touch* black key surfaces that reproduce the finely textured grain and rich lustre of ebony wood.



COUNTERWEIGHTS

In addition to grade-weighted hammers, the latest *Grand Feel* actions also feature small metal counterweights attached to the underside of the keys.

As with an acoustic piano, these additional weights help to balance the touch of the keyboard during pianissimo passages, while providing a feeling of greater substance and solidity when playing with force.



TRIPLE SENSOR

Supplementing the authentic touch feeling, *Grand Feel* keyboard actions also incorporate Kawai's latest 3-sensor key detection system for enhanced playing realism.

This additional third sensor greatly improves responsiveness when striking the same keys repeatedly, allowing rapid trills etc. to sound much smoother and more acoustic piano-like when played.

Stunning Sound

Eponymously named after the company's second president, the Shigeru Kawai range of luxury grand pianos were conceived as the next step in evolving the art of the piano. Each world-class instrument is hand-crafted by Master Piano Artisans (MPAs), using the finest available materials to ensure optimum touch, tone, and artistic expression.

Widely regarded as 'the premier piano of Japan', the flagship SK-EX concert grand graces the stages of concert halls and musical institutions around the globe, receiving universal acclaim for its magnificent tonal clarity and exceptional dynamic range.

In order to recreate the peerless sound of a Shigeru Kawai SK-EX digitally, the latest Concert Artist models incorporate a variety of unique technologies that capture and reproduce characteristics of the original piano with incredible realism and authenticity.





SHIGERU KAWAI

88-KEY PIANO SAMPLING & HARMONIC IMAGING XL

The rich, expressive sound of the Shigeru Kawai SK-EX is at the heart of the latest Concert Artist digital pianos, with all 88 keys of this world-class instrument painstakingly recorded, meticulously analysed, and accurately reproduced as high-fidelity digital waveforms.

Recording each key individually in this way – as opposed to stretching the same tone to span multiple notes – preserves the grand piano's unique harmonic character, and guarantees that the sound heard when playing any one of the Concert Artists' real wooden keys is a faithful representation of the original acoustic source.

In addition, the SK-EX is also captured at a variety of different volume levels from pianissimo to fortissimo. This allows an accurate acoustic portrait of the instrument to be assembled using Kawai's *Harmonic Imaging* technology, resulting in smooth tonal transitions across the keyboard and throughout the entire dynamic range.





SK-EX RENDERING

The CA79 and CA99's *SK-EX Rendering* engine also utilises multi-channel sampling to capture the sound from different points of the Shigeru Kawai concert grand piano.

This modern technique not only allows a broader range of tonal characteristics to be recorded and reproduced, but also further improves the connection felt between the keyboard action and piano sound.



88-KEY RESONANCE

The naturally expressive Shigeru Kawai sound is further enriched by advanced resonance algorithms which physically model the complex tonal interactions produced by the strings, dampers, and various other parts of an acoustic piano.

These resonances are generated for all 88 keys progressively, allowing the CA79 and CA99 to behave just like an acoustic piano.



VIRTUAL TECHNICIAN

Skilled piano technicians are responsible for performing the various tuning, voicing, and regulation adjustments that allow an acoustic piano to truly sing.

The powerful *Virtual Technician* feature simulates these careful refinements digitally, allowing performers to shape aspects of the piano's tonal character and playability to suit their unique personal preferences.

* SK-EX Rendering & 88-key Resonance features available on the CA79/CA99 only.



PREMIUM SOUND DELIVERY

The distinctive sound of an acoustic piano is produced by felt hammers striking metal strings. As these strings vibrate, they transfer energy through the bridge onto the instrument's wooden soundboard, resulting in a rich, powerful sound.

In order to reproduce these characteristics, and transform the digitally generated Shigeru Kawai SK-EX sound into an authentic acoustic piano tone, the latest Concert Artist instruments feature premium quality audio processing and amplifier technologies, and multi-speaker delivery systems developed in collaboration with Onkyo.

The flagship CA99 model raises the bar even further, with the inclusion of a real wooden soundboard, achieving a new standard in digital piano audio fidelity and realism.



ONKYO TECHNOLOGY

Developed in collaboration with respected Japanese audio manufacturer, Onkyo, the latest Concert Artist models feature high-grade processing and amplification systems.

These premium components combine to deliver best-in-class audio quality, reproducing the Shigeru Kawai SK-EX concert grand piano sounds with exceptional clarity and minimal distortion.



360° SPEAKER SYSTEM

The CA79 and CA99 both feature powerful 6-speaker delivery systems that utilise premium driver units, and custom-engineered diffuser panels which help to expand the pianos' tonal projection in all directions.

These additional components create a 360° sound field around the instrument, ensuring a natural piano sound for both the player, and those listening elsewhere in the room.



REAL SOUNDBOARD

In addition to conventional speakers, the flagship CA99 also incorporates Kawai's latest *Twin Drive* soundboard speaker system.

This unique acoustic projection technology harnesses transducer components to channel sound energy onto a real wooden soundboard, resulting in an even richer, more organic piano tone that faithfully reproduces the ambience of an acoustic piano.



CA59 | Button panel with OLED display



CA99 | Touchscreen display

INTEGRATED CHEEKBLOCK CONTROL PANEL

Concealing their impressive digital features, the Concert Artists' main control panel is discreetly embedded within the pianos' left cheekblock. This helps to preserve the instruments' attractive piano-like appearance, and allows performers to enjoy the simple pleasure of playing music without the visual distraction of flashing lights and rows of buttons directly above the keyboard.

The CA79 and CA99's large 5" touchscreen display features a modern user interface that is optimised for pianists, while providing easy access to additional sounds and functions that inspire musical creativity.

Adjustments to the *Virtual Technician* and other settings are automatically recalled every time the instrument is powered on, while the touchscreen display itself can also be set to gently fade out while playing in order to aid concentration.

Engaging Features

Complementing the instruments' authentic, fully wooden-key keyboard action, stunning grand piano sounds, and premium audio delivery technologies, the latest Concert Artist models also offer a strong selection of digital features that further enrich the learning and playing experience.

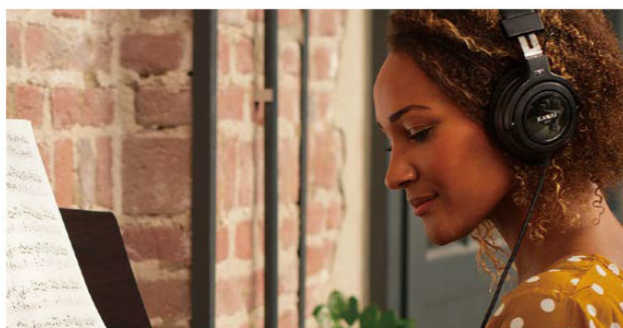
Bluetooth® connectivity and USB audio record/playback* allows musicians to extend the functionality of their piano, or play along with their favourite artists, while the convenient metronome and integrated lesson functions, featuring classical etudes and Alfred course books, ensure that regular practise is both productive and engaging for aspiring pianists.

All functions are accessible from the instruments' control panel, or via a dedicated control app, allowing sounds and settings to be changed with a simple tap or swipe.

* USB audio record/playback feature not available on the CA49.



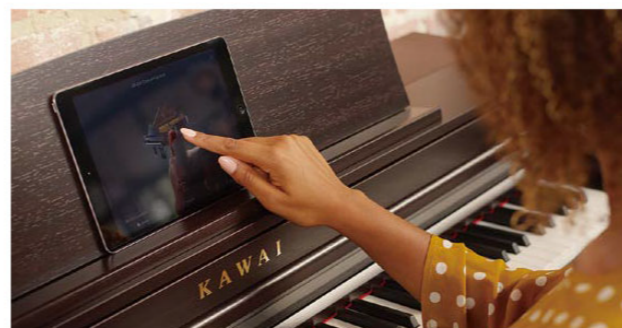




HEADPHONE SOUND

One of the many benefits of owning a digital piano is the ability to connect a pair of headphones, allowing players to enjoy the instrument without disturbing others.

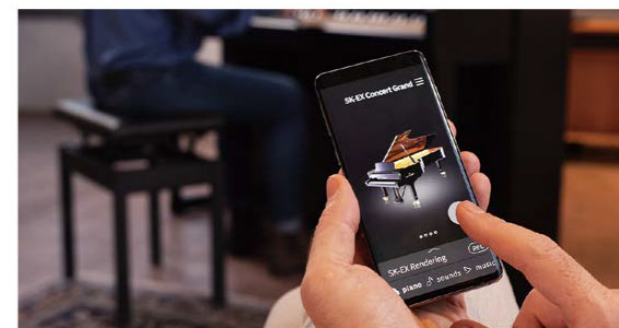
The Concert Artists' *Spatial Headphone Sound* (SHS) technology subtly enhances the depth and realism of the pianos' sound when listening through headphones, and helps to reduce auditory fatigue when playing for extended periods of time.



FULL BLUETOOTH

The latest Concert Artist instruments feature built-in Bluetooth MIDI connectivity, allowing the pianos to communicate with smart devices wirelessly, and be enjoyed with a wide variety of music-related apps.

Moreover, Bluetooth Audio* capability also enables the sound from songs and videos to be played through the instruments' Onkyo amplifier and speaker systems without any additional cables.



PIANOREMOTE APP

The Concert Artists' redesigned communication standard allows the instrument's various features and functions to be accessed via the dedicated *Piano Remote* app for iOS and supported Android devices.

The app connects to the piano wirelessly via the Concert Artists' integrated Bluetooth, providing an effortless way to change sounds, or enjoy the vast array of built-in music content from the comfort of an armchair.

* Bluetooth Audio feature not available on the CA49.

CA49

An introduction to Concert Artist quality



- Grand Feel Compact wooden-key keyboard action
- Ivory Touch key surfaces, triple sensor, let-off, counterweights
- Progressive Harmonic Imaging sound engine
- Advanced audio processing and amplification
- Powerful two speaker, 40 W output system
- Integrated Bluetooth® MIDI
- Checkblock control panel with OLED display
- Attractive cabinet design with 3-position music rest
- 136 (W) x 46 (D) x 91.5 (H) cm





CA59 | Premium Rosewood

CA59

Concert Artist performance & affordability



- Grand Feel Compact wooden-key keyboard action
- Ivory Touch key surfaces, triple sensor, let-off, counterweights
- Harmonic Imaging XL sound engine
- Advanced audio processing and amplification
- Powerful four speaker, 100 W output system
- Integrated Bluetooth® MIDI and Audio
- Checkblock control panel with OLED display
- Attractive cabinet design with 3-position music rest
- 142.5 (W) x 46.5 (D) x 91.5 (H) cm

CA79

Premium Concert Artist authenticity



- Grand Feel III wooden-key keyboard action
- Ivory & Ebony Touch key surfaces, 3-sensor, let-off, counterweights
- SK-EX Rendering piano sound engine
- Premium audio processing and amplification
- Powerful, high-fidelity 6-speaker output system
- Integrated Bluetooth® MIDI and Audio
- Modern 5" LCD touchscreen display
- Premium cabinet design with 6-position music rest
- 145 (W) x 47 (D) x 94 (H) cm





CA99 | *Ebony Polish*

CA99

The Concert Artist flagship



- Grand Feel III wooden-key keyboard action
- Ivory & Ebony Touch key surfaces, 3-sensor, let-off, counterweights
- SK-EX Rendering piano sound engine
- Premium audio processing and amplification
- Powerful 6-speaker output system with TwinDrive soundboard
- Integrated Bluetooth® MIDI and Audio
- Modern 5" LCD touchscreen display
- Premium upright cabinet design with SoftFall fallboard
- 144.5 (W) x 47 (D) x 101 (H) cm

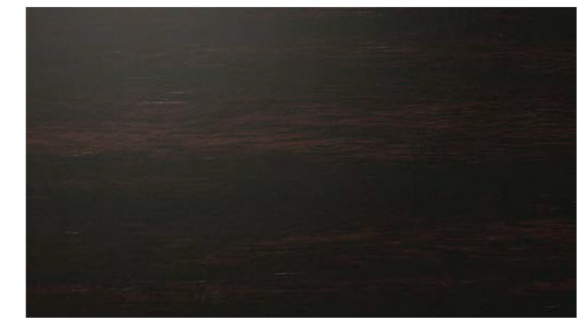
TECHNICAL SPECIFICATIONS

		CA49	CA59
Keyboard	Action Type	Grand Feel Compact	
	Key Surfaces	Ivory Touch	
	Other Features	Graded hammers, Bass region counterweights, Triple sensor, Let-off simulation	
Sound	Sound Engine	Progressive Harmonic Imaging: 88-key piano sampling, Damper + String resonance	Harmonic Imaging XL: 88-key piano sampling, Acoustic Rendering resonance
	Grand Piano Source	Shigeru Kawai SK-EX, Kawai EX	Shigeru Kawai SK-EX, Shigeru Kawai SK-5, Kawai EX
	No. of Sounds	19 voices	44 voices
	Polyphony	max. 192 notes	max. 256 notes
	Virtual Technician	Smart Mode: 10 types, Advanced Mode: 17 parameters (via control app)	Smart Mode: 10 types, Advanced Mode: 21 parameters
	Reverb & Effects	Reverb: 6 types, Effects: Preset	Reverb: 6 types, Effects: 24 types
Audio System	Output Power	40 W (20 W x 2)	100 W (50 W x 2)
	Speakers	13 cm x 2 (woofers) 5 cm x 2 (tweeters)	13 cm x 2 (woofers) (8 x 12 cm) x 2 (top speakers)
Recorder	Internal Recorder	3 song, 1 track recorder – max. 10,000 notes	10 song, 2 track recorder – max. 90,000 notes
	USB Recorder	–	Play & Record MP3/WAV, Overdub MP3/WAV
	Metronome	7 time signatures	10 time signatures, 100 drum rhythms
Internal Songs	Demo Songs + Piano Music	19 songs (Demo Songs only)	33 + 29 or 42 songs ²
	Concert Magic	40 songs	176 songs
	Lesson Function	6 lesson books ³	12 lesson books ³
Features	Keyboard Modes	Dual, 4Hands (Volume/Balance adjustable)	Dual, Split, 4Hands (Volume/Balance adjustable)
	Display	128 x 128 pixel OLED	128 x 64 pixel OLED
	Memories	–	16 Registration memories (8 x 2)
	Spatial Headphone Sound	Normal, Forward, Wide, Off	
	Pedals	Damper (with half-pedal support), Soft, Sostenuto – Grand Feel Pedal System	
	App Support	PianoRemote (iOS/Android)	
Connectivity	Headphones	1 x ¼", 1 x ⅛" STEREO	
	Audio	–	LINE IN (¼" L/MONO, R), LINE OUT (¼" L/MONO, R)
	MIDI/USB	MIDI (IN/OUT), USB to Host	MIDI (IN/OUT), USB to Host, USB to Device
	Bluetooth® ¹	Bluetooth MIDI	Bluetooth MIDI, Bluetooth Audio
	Power	DC IN (12 W consumption)	DC IN (20 W consumption)
Design	Cabinet Type	Normal type, adjustable music rest (3 positions), sliding key cover	
	Dimensions (Not including music rest)	136 (W) x 46 (D) x 91.5 (H) cm 53 ½" (W) x 18 ¼" (D) x 36" (H)	142.5 (W) x 46.5 (D) x 91.5 (H) cm 56" (W) x 18 ⅓" (D) x 36" (H)
	Weight	58 kg / 128 lbs.	66 kg / 145.5 lbs.

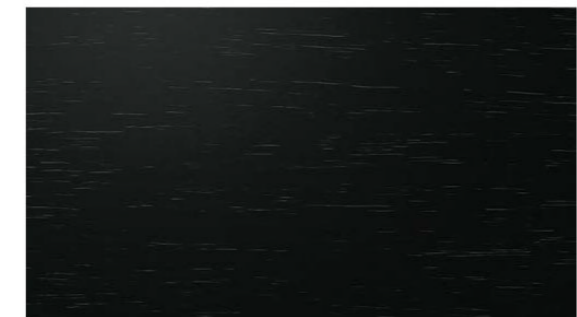
¹ Availability of Bluetooth function dependent on market region. | ² Depending on market region. | ³ Lesson books sold separately.

CABINET FINISHES

CA79	CA99
Grand Feel III	
Ivory Touch + Ebony Touch	
Graded hammers, Graded counterweights, Triple sensor, Let-off simulation	
SK-EX Rendering: 88-key multi-channel piano sampling, 88-key resonance modelling Harmonic Imaging XL: 88-key piano sampling, Acoustic Rendering resonance	
Shigeru Kawai SK-EX, Shigeru Kawai SK-5, Kawai EX	
SK-EX Rendering: 10 rendering characters Harmonic Imaging XL: 66 voices	SK-EX Rendering: 10 rendering characters Harmonic Imaging XL: 90 voices
max. 256 notes	
10 presets, 21 adjustable parameters	
Reverb: 6 types, Effects: 24 types, Ambience: 10 types (SK-EX Rendering only)	
100 W (50 W x 2)	135 W (45 W x 3)
13 cm x 2 (Onkyo woofers) (8 x 12) cm x 2 (Onkyo top speakers, with diffusers) 5 cm x 2 (tweeters)	TwinDrive Soundboard Speaker System 8 cm x 4 (Onkyo top speakers, with diffuser) 2 cm x 2 (Onkyo dome tweeters)
10 song, 2 track recorder – max. 90,000 notes Play & Record MP3/WAV, Overdub MP3/WAV	
10 time signatures, 100 drum rhythms	
37 + 29 or 42 songs ²	39 + 29 or 42 songs ²
176 songs	
12 lesson books ³	
Dual, Split, 4Hands (Volume/Balance adjustable)	
5" LCD touchscreen (480 x 800 pixels)	
100 User sounds	
Normal, Forward, Wide, Off	
Damper (with half-pedal support), Soft (with half-pedal support), Sostenuto – Grand Feel Pedal System	
PianoRemote (iOS/Android)	
1 x ¼", 1 x ⅛" STEREO	
LINE IN (⅛" STEREO, with volume adjust knob), LINE OUT (¼" L/MONO, R)	
MIDI (IN/OUT), USB to Host, USB to Device	
Bluetooth MIDI, Bluetooth Audio	
AC IN (55 W consumption)	
Normal type, adjustable music rest (6 positions), sliding key cover	Upright piano type, fixed music rest, SoftFall rotating key cover
145 (W) x 47 (D) x 94 (H) cm 57" (W) x 18" (D) x 37" (H)	144.5 (W) x 47 (D) x 101 (H) cm 57" (W) x 18 ½" (D) x 39 ⅔" (H)
76 kg / 167 ½ lbs. 79 kg / 174 lbs. (Ebony Polish)	83 kg / 183 lbs. 89 kg / 196 lbs. (Ebony Polish)



Premium Rosewood



Premium Satin Black



Premium Satin White



Ebony Polish (CA79/CA99 models only)

Specifications are subject to change without notice. | Cabinet finish availability and included bench style may vary depending on market region.